

# JTP-309 AUTOMATIC MAINS FAILURE UNIT USER'S GUIDE

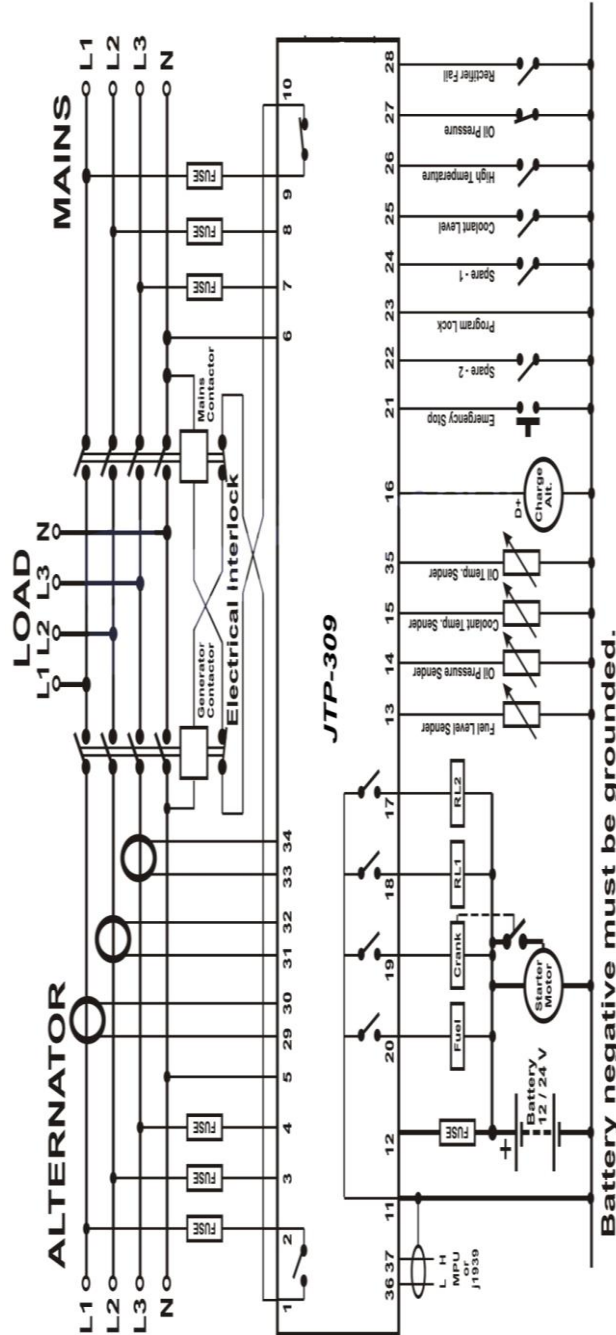
## 1. How to Enter Program Menu

Press OFF Button if not in OFF state. OFF button LED will turn on. Press OFF+MENU buttons and hold for approximately 3 seconds. PARAMETERS MENU will appear on the screen. Now you are inside MENU of JTP309.



## 2. How to Change Parameters

When PARAMETERS MENU is printed on the screen press MENU button once. Parameters on the first screen are printed on the display. First Parameter is selected.



| Parameter         | Default Value  | Function                                    |
|-------------------|----------------|---|
| Mains V. Low Lim  | 170            | Adjust Mains Voltage Low Limit              |
| Mains V. Hig. Lim | 270            | Adjust Mains Voltage High Limit             |
| Gen.V. Low Limit  | 170            | Adjust Generator Voltage Low Limit          |
| Gen.V. Hig Limit  | 270            | Adjust Generator Voltage High Limit         |
| Freq.Low Limit    | 45             | Adjust Frequency Lower Limit                |
| Freq.High Limit   | 57             | Adjust Frequency Higher Limit               |
| Alarm Delay       | 3              | Adjust Delay Time Before Alarm              |
| Crank Number      | 3              | Adjust Crank Trials                         |
| Wait Bef. Crank   | 3              | Wait Before Crank in Seconds                |
| Wait Betw. Crank  | 10             | Time Between Two Cranks in Seconds          |
| Crank Time        | 4              | Maximum Crank Time in Seconds               |
| Stop Time         | 0              | Stop Time If Stop Bobbin is Used in Seconds |
| Mains Wait Time   | 0.5            | Mains Wait Time in Minutes                  |
| Cooling Time      | 0.5            | Genset Cooling Time in Minutes Before Stop  |
| Mains.Cont.Time   | 4              | Time Before Mains Contactor Energized       |
| Gense.Cont.Time   | 4              | Time Before Genset Contactor Energized      |
| Spare Relay Fun   | Alarm          | Function of Spare Relay                     |
| Gen Start Delay   | 0              | Waiting Time Before Genset Start            |
| Gas Warning Lim   | 0              | Fuel Warning Level (0 if not functional)    |
| Gas Stop Limit    | 0              | Fuel Stop Limit (0 if not functional)       |
| Choke Time        | 0              | Time for Choke Function in Minutes          |
| Oil Sens.In Typ   | Oil.G          | Oil Pressure Sensor Type (Level or Gauge)   |
| CT Ratio .... /5  | 100            | Current Transformer Ratio                   |
| OverCurrent Lim   | 110            | Over Current Limit                          |
| Low Oil Pre.Limit | 2              | Low Oil Pressure Limit in Bar               |
| Hi.Temp.War.Lim   | 90             | High Temperature Warning Limit              |
| Hi.Temp.Sto.Lim   | 95             | High Temperature Stop Limit                 |
| Low Bat. Voltage  | 8              | Low Battery Voltage Limit                   |
| Hig.Bat. Voltage  | 50             | High Battery Voltage Limit                  |
| Temp.Sens.Selec   | Vdo            | Coolant Temperature Sensor Type Selection   |
| Oil Temp Sensor   | Vdo            | Oil Temperature Sensor Type Selection       |
| Operating Mode    | 3 Ph.          | 1/3 Phase operating Mode Selection          |
| Crank Tooth Num   | 20             | Crank Tooth Number for Magnetic Pick-Up     |
| Coolant Sensor In | N.O.           | Coolant Sensor Input Selection N.O/N.C.     |
| Em.Stop Input     | N.O.           | Emergency Stop Input Type N.O./N.C.         |
| Oil Pr.Sens.Sel   | Vdo10          | Oil Pressure Sensor Type Selection          |
| Language Select   | ENG            | Language Selection                          |
| Time Adjust       | "Current Time" | Adjust the Time of RTC                      |
| Date (Day/Month)  | "Current Date" | Adjust Day and Month of RTC                 |
| Date (Year)       | "Current Year" | Adjust Year of RTC                          |
| LCD Contrast      | 32             | LCD Contrast Level                          |
| Srvice Time       | 0              | Adjust Service Time to Generate Warning     |